

Instructions for Finding the Certified Test Results of Your Meter

1. Find the serial # embossed on your water meter.

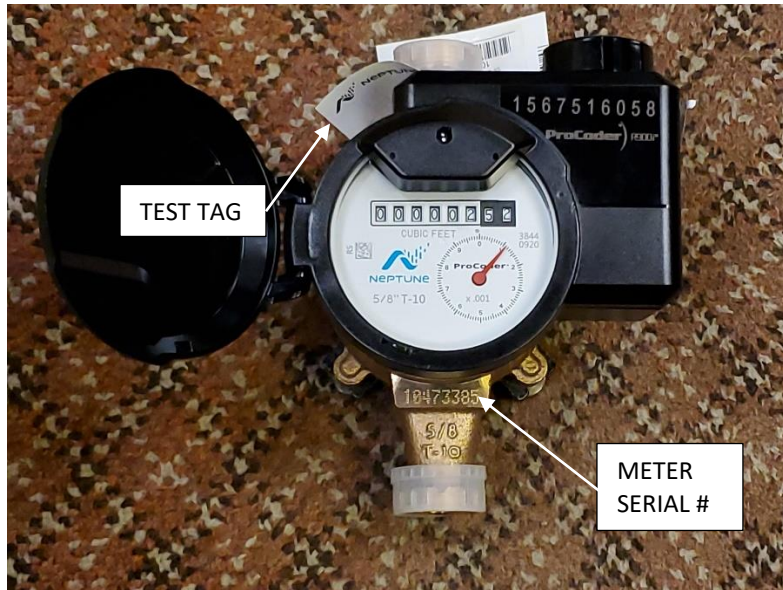


2. Open the *Certified Meter Accuracy Test Results Lookup*. Press Ctrl+F to get the Find dialog box to pop up.

A screenshot of a web browser displaying a data table titled 'Kent County Test Results (2018-2021).pdf'. The table has columns for 'Station/Name', 'Location/Address', 'Municipality', 'Serial #', 'Type/Model', 'Reg./Date', 'High/Pressure', 'Low/Min', 'High/Max', 'Low/Min', 'High/Max', 'Low/Min', and 'Certification'. A search bar is highlighted with a red box in the top right corner of the browser window. The search bar contains the text 'METER SERIAL #'. The table contains multiple rows of data, including station names like 'S1807-001' and 'S1807-002', and various numerical values.

Type your Meter Serial # into the Find dialog box and press Enter.

3. You will then be able to see the Certified Test Results for the meter.



New Meter

The American Water Works Association (AWWA) Meter Testing Requirements can be found here: <https://kentcountywater.org/config/docs/AWWA%20Test%20Requirements%20for%20Meters.pdf>